



### Description

The Ensign 3 is a hinge-actuated safety-interlock switch designed to fit at the hinge point of guards. With its rotatable head, the versatile Ensign 3 offers up to four different mounting options.

Operation of the unit is achieved by the hinging action of the guard. The actuation shaft is connected to the existing hinge pin and the degree of operation can be adjusted to suit the application via the adjustable cam in the switch head.



**IMPORTANT:** After adjustment, the cam must be secured in position with the supplied cam locking pin to ensure safety function performance.

The switch includes the necessary safety-related functions, such as forced-guided contacts and a tamper-resistant mechanism, allowing machinery to be safeguarded in compliance with the machinery directive. It is sealed to IP67 and has one conduit entry, M16 or connector style.

### Features

- Compact size—90.5 x 31 x 30.4 mm (3.56 x 1.22 x 1.2 in) housing
- Ideal for small, lightweight guards
- Degree of operation can be customized with adjustable cam
- Contacts, 2 N.C. & 1 N.O. or 3 N.C. (sealed to IP67)
- Four possible shaft positions, easy to install
- Solid and hollow shafts available

### Specifications

Safety Ratings					
Standards	EN954-1, ISO13849-1, IEC/EN60204-1, NFPA79, EN1088, ISO14119, IEC/EN60947-5-1, ANSI B11.19, AS4024.1				
Safety Classification	Cat. 1 device per EN 954-1 dual channel interlocks suitable for Cat. 3 or 4 systems				
Functional Safety Data *	B10d: > 2 x 10 <sup>6</sup> operations at min. load PFH <sub>D</sub> : < 3 x 10 <sup>-7</sup> MTTF <sub>D</sub> : > 385 years May be suitable for use in performance levels Ple or Pld systems (according to ISO 13849-1:2006) and for use in SIL2 or SIL3 systems (according to IEC 62061) depending on the architecture and application characteristics				
Certifications	CE Marked for all applicable directives, cULus, and TÜV				
Outputs					
Safety Contacts *	3 N.C. direct-opening action	2 N.C. direct-opening action			
Auxiliary Contacts	—	1 N.O.			
Shaft Rotation for Contact Operation	3 N.C. Adjustable 12° max.: 3° min. 2 N.C. 1 N.O. (BBM) Adjustable 14° max.: 5° min. 2 N.C. 1 N.O. (MBB) Adjustable 12° max.: 3° min.				
Thermal Current I <sub>th</sub>	10 A				
Rated Insulation Voltage	(Ui) 500V				
Switching Current @ Voltage, Min.	5 mA @ 5V DC				
Utilization Category					
A600/AC-15	(Ue)	600V	500V	240V	120V
	(Ie)	1.2 A	1.4 A	3 A	6 A
DC-13	(Ue)	24V			
	(Ie)	2 A			
Operating Characteristics					
Break Contact Force, Min.	8 cNm (torque on shaft)				
Actuation Speed, Max.	160 mm (6.29 in.)/s				
Actuation Frequency, Max.	1 cycle/s				
Operating Life @ 100 mA load	1,000,000 operations				
Environmental					
Enclosure Type Rating	IP67				
Operating Temperature [C (F)]	-20...+80° (-4...176°)				
Physical Characteristics					
Housing Material	UL Approved glass-filled PBT				
Shaft Material	Stainless Steel				
Weight [g (lb)]	100 (0.22)				
Color	Red				

\* Usable for ISO 13849-1:2006 and IEC 62061. Data is based on the B10d value given and:

- Usage rate of 1op/10 mins., 24 hrs/day, 360 days/year, representing 51840 operations per year
- Mission time/Proof test interval of 38 years

\* The safety contacts are described as normally closed (N.C.) i.e., with the guard closed, actuator in place (where relevant) and the machine able to be started.

Product Selection

Contact			Actuator Shaft Dimensions—mm (in)	Shaft Type	Cat. No.			
Safety	Auxiliary	Action			M16 Conduit		Connector*	
					M16	1/2 inch NPT Adaptor	6-Pin Micro (M12)	Connect to ArmorBlock Guard I/O 5-Pin Micro (M12) *
3 N.C.	—	—	80 x Ø10 (3.14 x 0.39)	Solid	440H-E22025	440H-E22050	440H-E22059	—
			60 x Ø8 (2.36 x 0.31)		440H-E22031	440H-E22051	440H-E22060	—
			50 x Ø10 (1.96 x 0.39)		440H-E22047	440H-E22052	440H-E22061	440H-E2NNPPS
			30 x Ø16 (1.18 x 0.63) bore Ø9.5 (0.37)	Pre-bored	440H-E22067	440H-E22068	440H-E22069	440H-E2NNHPS
2 N.C.	1 N.O.	BBM	80 x Ø10 (3.14 x 0.39)	Solid	440H-E22027	440H-E22053	440H-E22037	—
			60 x Ø8 (2.36 x 0.31)		440H-E22033	440H-E22054	440H-E22039	—
			50 x Ø10 (1.96 x 0.39)		440H-E22048	440H-E22055	440H-E22062	—
			30 x Ø16 (1.18 x 0.63) bore Ø9.5 (0.37)	Pre-bored	440H-E22064	440H-E22065	440H-E22066	—
		MBB	80 x Ø10 (3.14 x 0.39)	Solid	440H-E22029	440H-E22056	440H-E22038	—
			60 x Ø8 (2.36 x 0.31)		440H-E22035	440H-E22057	440H-E22040	—
			50 x Ø10 (1.96 x 0.39)		440H-E22049	440H-E22058	440H-E22063	—
			30 x Ø16 (1.18 x 0.63) bore Ø9.5 (0.37)	Pre-bored	440H-E22070	440H-E22071	440H-E22072	—

\* With a 5-pin micro (M12) connector, not all contacts are connected. See page 3-97 for wiring details.  
\* For connector ratings, see 3-9.

Recommended Logic Interfaces

Description	Safety Outputs	Auxiliary Outputs	Terminals	Reset Type	Power Supply	Cat. Page No.	Cat. No.
<b>Single-Function Safety Relays</b>							
MSR127RP	3 N.O.	1 N.C.	Removable (Screw)	Monitored Manual	24V AC/DC	5-26	440R-N23135
MSR127TP	3 N.O.	1 N.C.	Removable (Screw)	Auto./Manual	24V AC/DC	5-26	440R-N23132
MSR126T	2 N.O.	None	Fixed	Auto./Manual	24V AC/DC	5-24	440R-N23117
MSR30RT	2 N.O. Solid State	1 N.O. Solid State	Removable	Auto./Manual or Monitored Manual	24V DC	5-16	440R-N23198
<b>Modular Safety Relays</b>							
MSR210P Base 2 N.C. only	2 N.O.	1 N.C. and 2 PNP Solid State	Removable	Auto./Manual or Monitored Manual	24V DC from the base unit	5-82	440R-H23176
MSR220P Input Module	—	—	Removable	—	24V DC	5-86	440R-H23178
MSR310P Base	MSR300 Series Output Modules	3 PNP Solid State	Removable	Auto./Manual Monitored Manual	24V DC	5-102	440R-W23219
MSR320P Input Module	—	2 PNP Solid State	Removable	—	24V DC from the base unit	5-106	440R-W23218

**Note:** For additional Safety Relays connectivity, see page 5-12.  
For additional Safety I/O and Safety PLC connectivity, see page 5-116.  
For application and wiring diagrams, see page 10-1.

Connection Systems

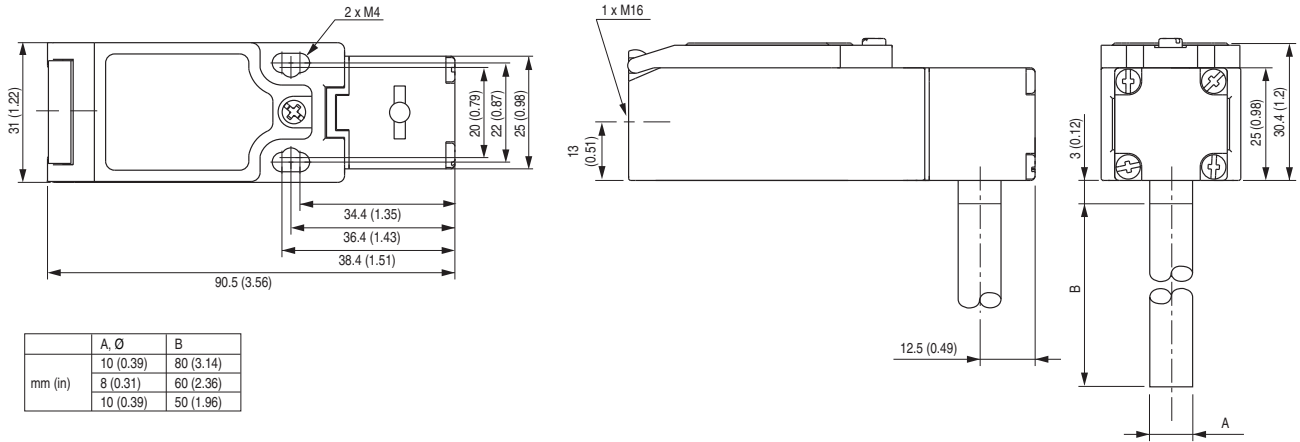
Description	6-Pin Micro	Connections to ArmorBlock Guard I/O 5-Pin Micro (M12)
	3 N.C.-2 N.C. & 1 N.O.	3 N.C.
Cordset	889R-F6ECA-‡	—
Patchcord	889R-F6ECRM-§	889D-F5ACDM-‡
Distribution Box	898R-P68MT-A5	—
Shorting Plug	898R-P61MU-RM	—

‡ Replace symbol with 2 (2 m), 5 (5 m), or 10 (10 m) for standard cable lengths.  
§ Replace symbol with 1 (1 m), 2 (2 m), 3 (3 m), 5 (5 m), or 10 (10 m) for standard cable lengths.  
**Note:** For additional information, see page 7-1.

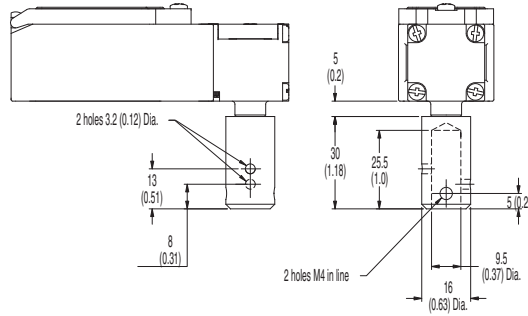
Interlock Switches  
**Hinge Switches**  
 Ensign™ 3

**Approximate Dimensions**

Dimensions are shown in mm (in.). Dimensions are not intended to be used for installation purposes.

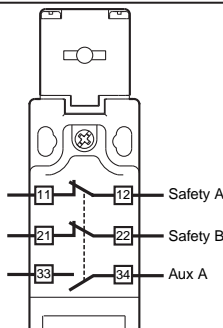
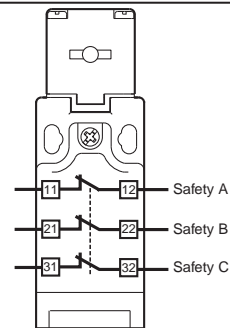
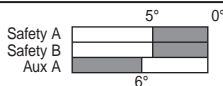
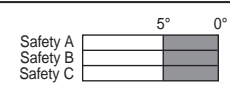

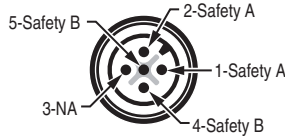
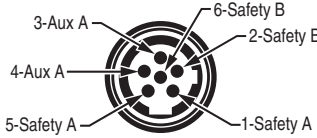
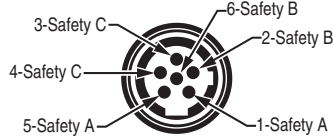


**Hollow Shaft**



**Note:** 2D, 3D and electrical drawings are available on [www.ab.com](http://www.ab.com).

Typical Wiring Diagrams

Description		2 N.C. & 1 N.O.	3 N.C.
Contact Configuration			
Contact Action		 BBM	
□ Open ■ Closed		 MBB	
5-Pin Micro (M12) For ArmorBlock Guard I/O		—	
6-Pin Micro (M12)			
Cordset 889R-F6ECA-*	1 Red/White	Safety A	Safety A
	5 Red/Black		Safety A
	2 Red	Safety B	Safety B
	6 Red/Blue		Safety B
	3 Green	Aux A	Safety C
4 Red/Yellow	Safety C		

\* Replace symbol with 2 (2 m), 5 (5 m) or 10 (10 m) for standard cable lengths.